



Zebra Intelligent Cabinets

Store, secure and manage your devices

April 2020

Zebra_Int-Cab-CFP-UMD.001





Organize, secure, track, manage and store your hardware

You need mobile computers, mobile printers, and tablets to optimize your workflows.

With Zebra's Intelligent Cabinets, you can securely store all your Zebra devices and:

- **Charge and monitor** battery life
- **Prevent damage and loss**
- **Regulate device access** by authorized personnel
- **Manage and update** devices
- **Optimize workflows**

Introducing Zebra **Intelligent Cabinets**

Your team needs device availability, security and to optimize workflows.

- ⇒ **Fully tested and Zebra-certified as a total solution** for all your Zebra products
- ⇒ **Customizable** for your industry, environment and product mixes
- ⇒ **Proven use cases** – 15 years of cabinets and customized solutions
- ⇒ **One source** for all your requirements: ordering, project management, delivery and operational lifecycle
- ⇒ **Global buying power** delivers cost-effective solutions
- ⇒ **Backed by Zebra** 50 years of industry experience to deliver best-fit solutions



Meet the fleet

Cabinets Three different models to fit 20-50 devices

Standardized
Modular
Portfolio



Features	Small	Midi	X-Large
Dimensions (H x W x D)	1012 x 700 x 437 mm 3'3.8" x 2'3.5" x 17.2"	1312 x 700 x 437 mm 4'3.6" x 2'3.5" x 17.2"	1912 x 700 x 437 mm 6'3.3" x 2'3.5" x 17.2"
Device Capacity	20	30	50

Cabinets

- Enhanced Security
- Zebra Access Management System™
- User workflow optimization
- Reduce device loss
- Dashboard reporting
- Battery charge status

Cabinets are supplied flat packed and come with required internal cables and shelving as one SKU
Mains lead and CC6000 cable orderable as separate items

Model Options

Access Management System

Allows logging, tracking and reporting of devices in and out of the cabinet.

A. Display screen (CC6000)

B. Device Application

C. Web-based Portal



Zebra Access Management System supported on Android™ OS devices 7.0 or above and available with Cabinet range only

Storage

Security

- Charging cradle
- Store as many devices as you need
- Door lock
- Centralized easy rapid access

- Zebra Access Management System (ZAMS)
- Access Management System Application on device
- CC6000 local reporting & Management
- Web-based portal for holistic view on devices – by site – location- cabinet- device

Cabinets



Signature Services:

Workflow Consulting | Design | Project Management | Learning | Software Integration | Installation & Deployment

See the **features**

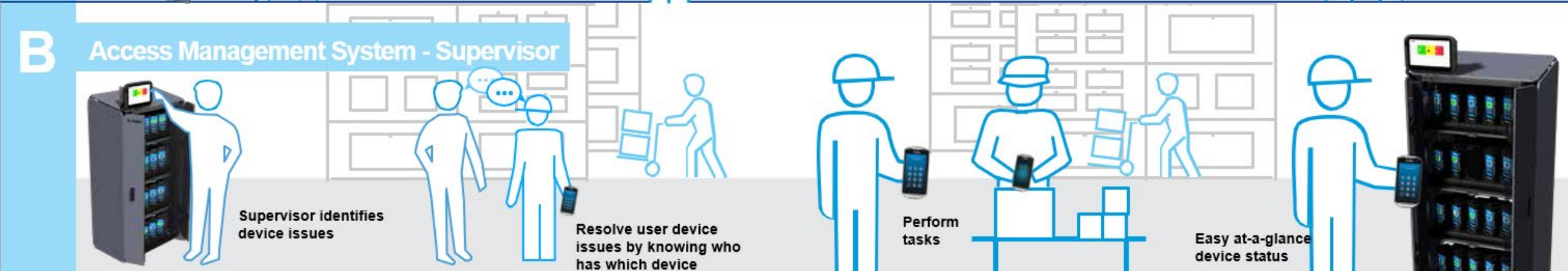
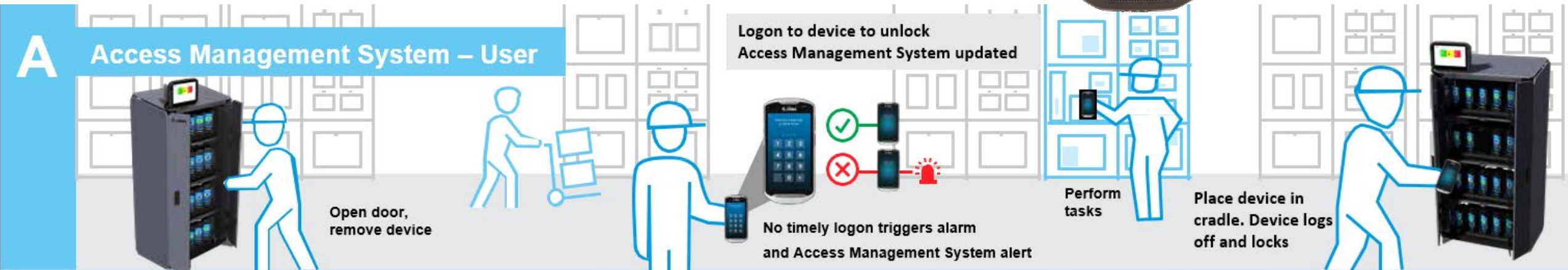


Mobile devices are always ready and charged when needed

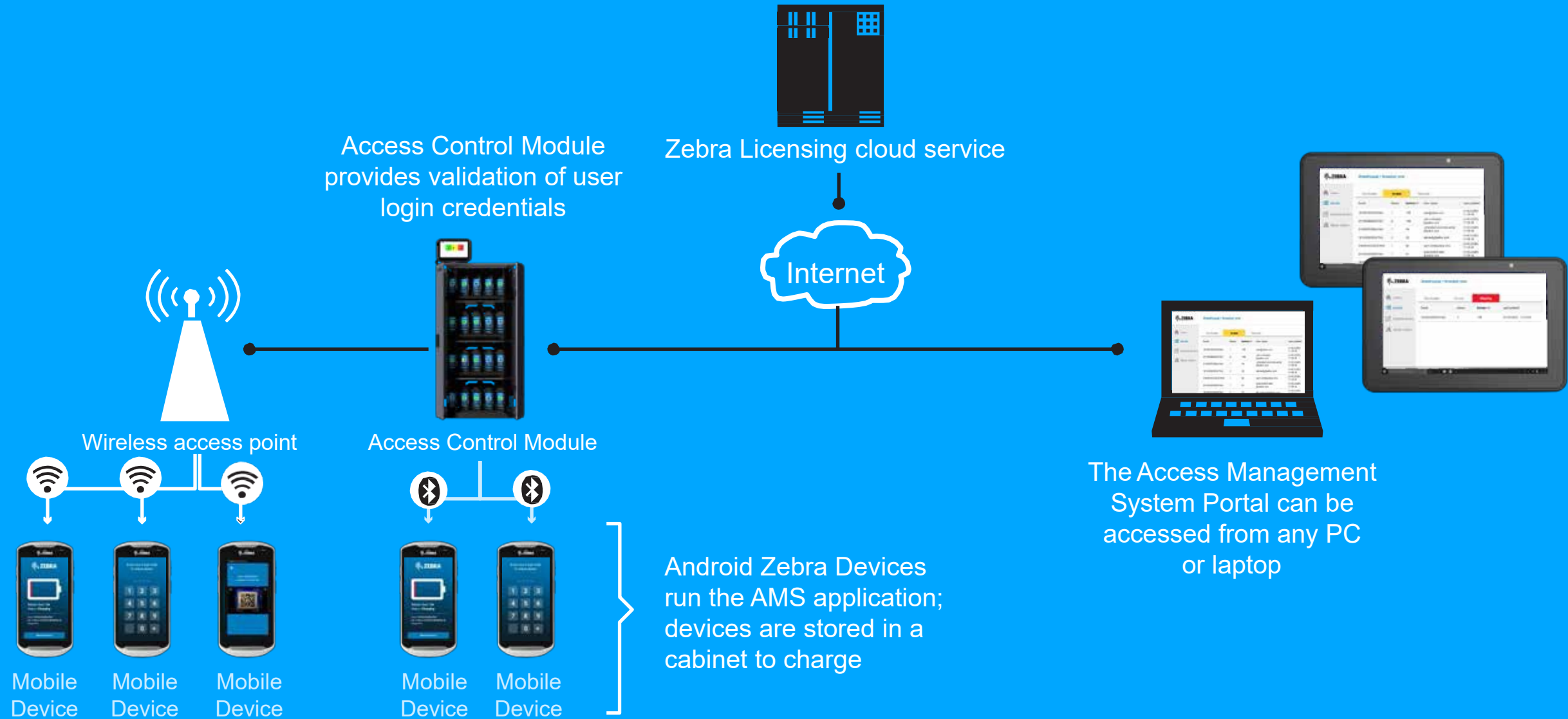
- ⇒ Wide portfolio to meet varying application and environmental needs
- ⇒ Customizable to hold numerous combinations of devices in various arrangements
- ⇒ Stadium design available to hold more devices in the same footprint
- ⇒ Modern open-leaf design
- ⇒ Passive cooling for reduced operating costs
- ⇒ Multi-level security offerings
 - Door lock options
 - Zebra Access Management System (cabinet display + device application + portal) to manage and track access to devices

Flow Process

With ZAMS



Zebra Access Management System Architecture overview



Zebra Access Management System

Real-time visibility into the status of your devices



Real-time Dashboard device information

- **Quickly identify device readiness and loss issues:** In cabinet on charge, in use, missing
- **Real time** updates to device status
- **Reporting:** See the status of an entire site or all your cabinets across your estate via Portal
- **Add, remove and configure** devices, cabinets and sites via Portal; add devices via Cabinet



Battery charge level



Log-on instructions



On charge in cabinet with battery level status



In use, username, time removed



Missing devices, red flag alert for devices missing over 5 minutes

Applications

Our selection of intelligent cabinets are ideal for:



Warehouse/ Manufacturing

- Storage and stocking area
- Reverse logistics
- Picking and packing
- Inventory management



Transportation and Logistics

- Postal and courier
- Device fleet management



Retail

- E-commerce
- Distribution centers
- Back and front of store

Let's explore the **benefits**

Benefit

Prevent loss and protect your investment

Maximize floorspace

Minimize maintenance and operating costs

Improve workflow efficiencies

Optimize user time

Cabinet Solution

End-to-end traceability for secure device storage, tracking and user accountability with features including user access, time and date stamp at points of removal and return

Double-density stadium shelving holds a greater number of devices in the same cabinet footprint, and wall mounting saves floorspace

Durable and robust, these cabinets are engineered with industry experience and built to last for years

Grant rapid and easy access to devices for multiple users simultaneously

Rapid access: ensure devices are organized, charged and ready for use at the start of the shift with easy-to-spot displays to ensure each user accesses the correct device

Let's explore the **benefits (cont'd)**

Benefit

Real-time asset and user management

Meets your application and environmental needs

Scalable to support your needs today and tomorrow

Quality assured to perform

Cabinet Solution

Dashboard reporting via customized portal provides full visibility with always-available data including asset status and usage

Customizable and adaptable for use anywhere

Common, repeatable, cost-effective models from a single supplier

Zebra-validated cabinets, racks, cradle locks and customized carts and trolleys help ensure assets and workflows function in tandem at high performance and provide optimal security

Designed for all your Zebra devices

Store a wide range of Zebra devices:

⇒ Cradles

⇒ Mobile computers

⇒ Mobile printers

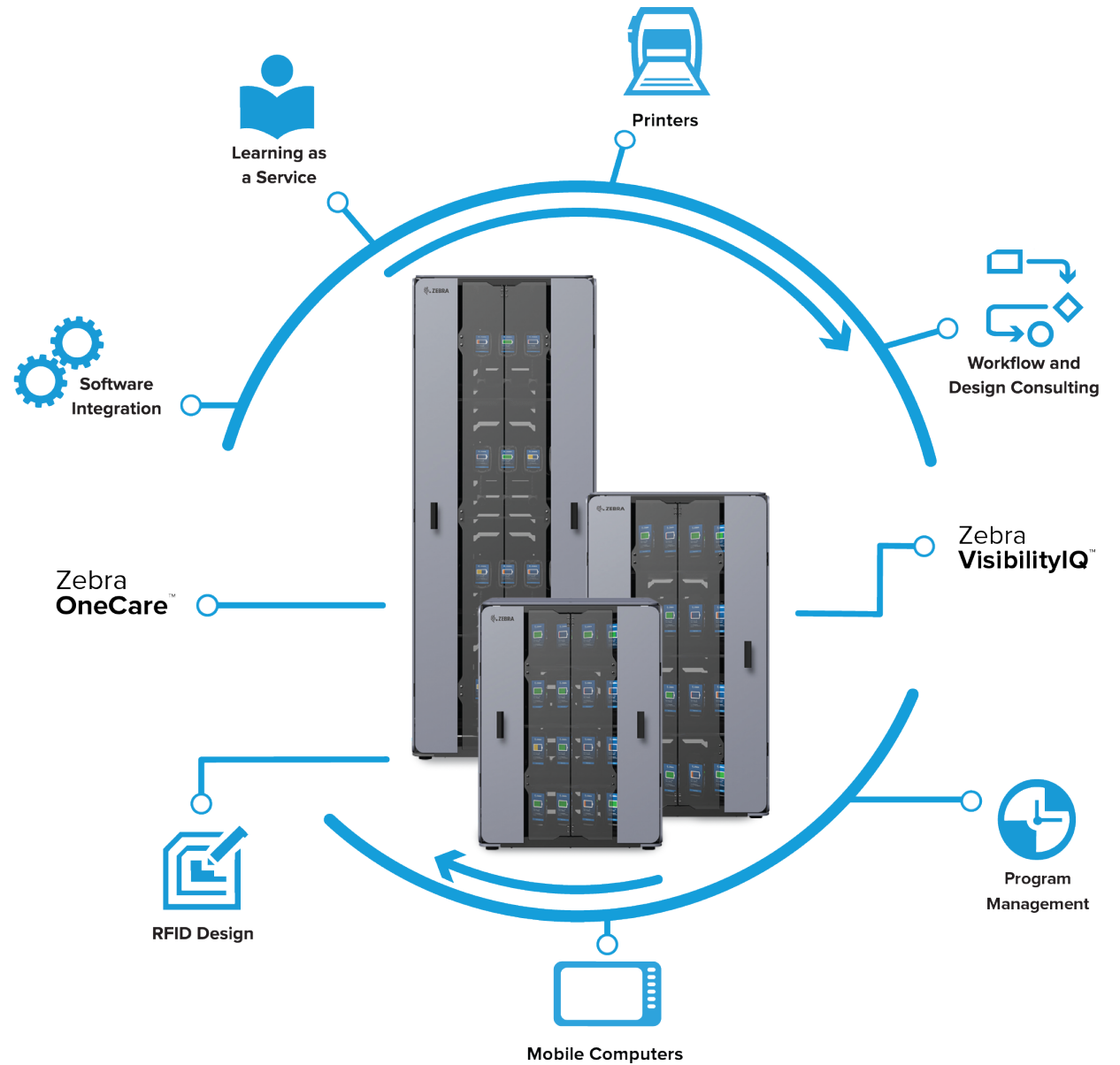
⇒ Tablets



Note: Compatibility and capacity limitations apply with some options. Refer to Product Description Documents for details.

An Intelligent Cabinet for every use case

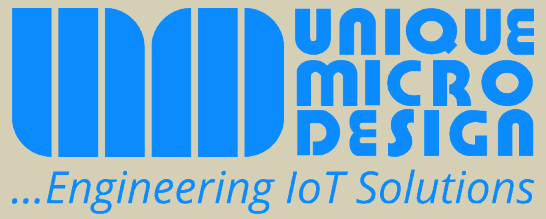
- ⇒ Store 20 to 50 devices depending on the type of devices and cradles used
- ⇒ Floor and wall mount
- ⇒ Cabinet screen and portal
- ⇒ Single or double shelf
- ⇒ Wi-Fi™/4G friendly
- ⇒ Ethernet friendly



Zebra is your trusted partner for all your enterprise needs

Rely on Zebra for all your enterprise mobile devices, software, solutions, services **and storage.**





UMD Value Add





Design

Design & manufacture:
IoT devices and interfaces

Cables

Modify products

Mechanical design and assemble

Support

Through our extensive professional services in

- Engineering
- Software
- Deployment
- Support

Source

- Data capture & ICT products and from our many agencies
- Systems Integration
- Solutions Architecture
- Systems Engineering

Full Stack Solution Provider

Encompassing

- Data Carriers (barcode, RFID, sensors)
- Edge devices and gateways
- Own and manage PCI-DSS compliant Data Center
- Middleware and Cloud Application Broker
- Software: cloud, mobile and embedded applications
- Design, deploy and managed services



Thank you!

For more information, visit, www.zebra.com/ws50

ZEBRA and the stylized Zebra head are trademarks of Zebra Technologies Corp., registered in many jurisdictions worldwide. All other trademarks are the property of their respective owners. ©2022 Zebra Technologies Corp. and/or its affiliates. All rights reserved.

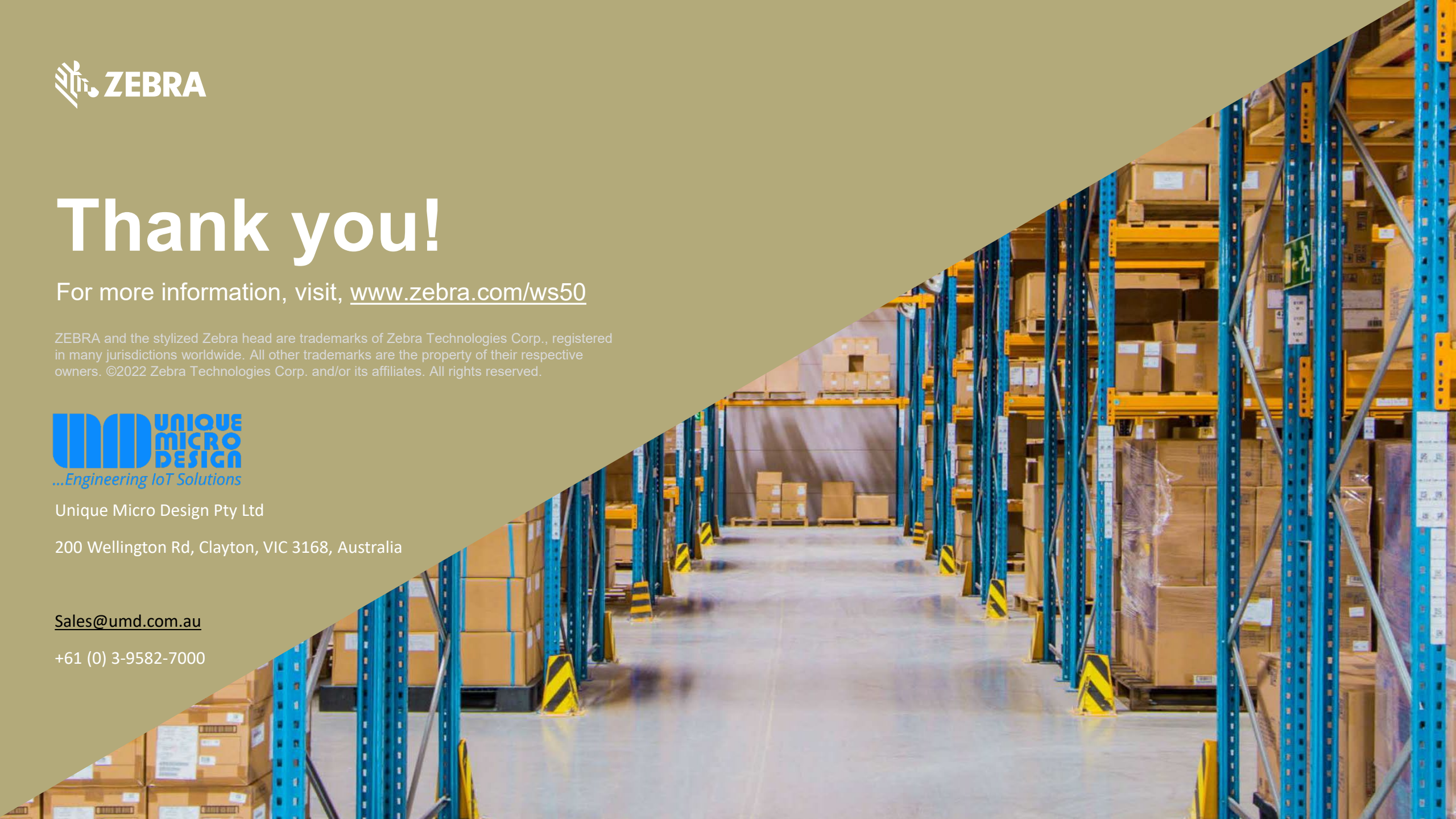


Unique Micro Design Pty Ltd

200 Wellington Rd, Clayton, VIC 3168, Australia

Sales@umd.com.au

+61 (0) 3-9582-7000



Thank You



Unique Micro Design Pty Ltd

200 Wellington Rd, Clayton, VIC 3168, Australia

Sales@umd.com.a

+61 (0) 3-9582-7000



ZEBRA and the stylized Zebra head are trademarks of Zebra Technologies Corp., registered in many jurisdictions worldwide. All other trademarks are the property of their respective owners. ©2020 Zebra Technologies Corp. and/or its affiliates. All rights reserved.